

# CCS Technical Documentation

## NPD-1 Series Transceivers

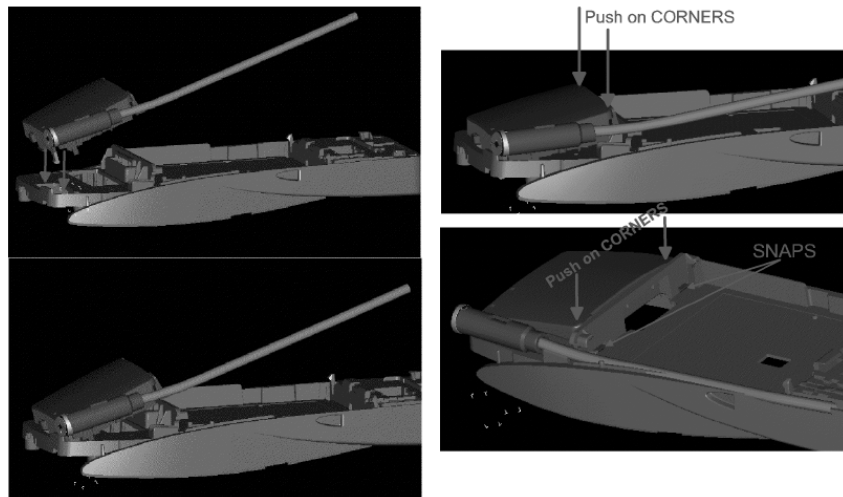
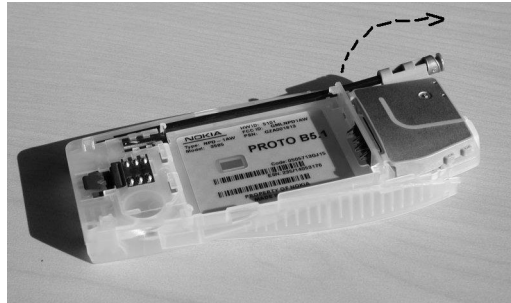
# Assembly



## Assembly Instructions

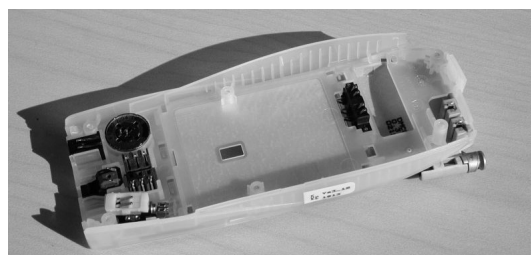
### 1. Antenna assembly.

*Note: Use a new part if the antenna has been removed.*



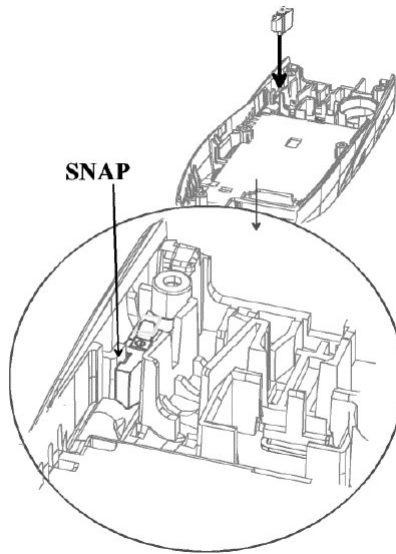
If antenna is being replaced, place a new antenna into the slot and press down (see arrows in above photos) to snap the assembly into place.

### 2. Parts assembly.

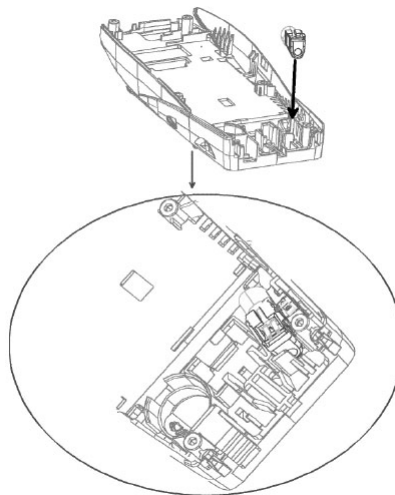


If any of the parts within the D-cover assembly have been removed, insert new parts into their proper locations. The following diagrams (a through i) illustrate in detail the insertion procedures for each assembly part.

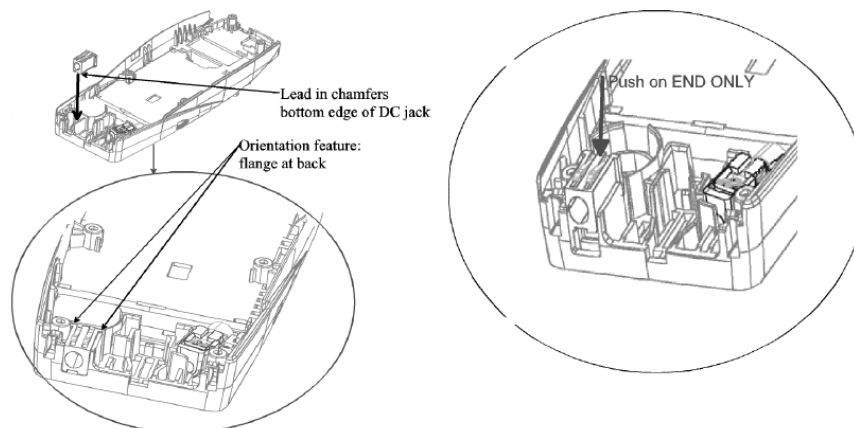
**a.) Ground clip assembly**



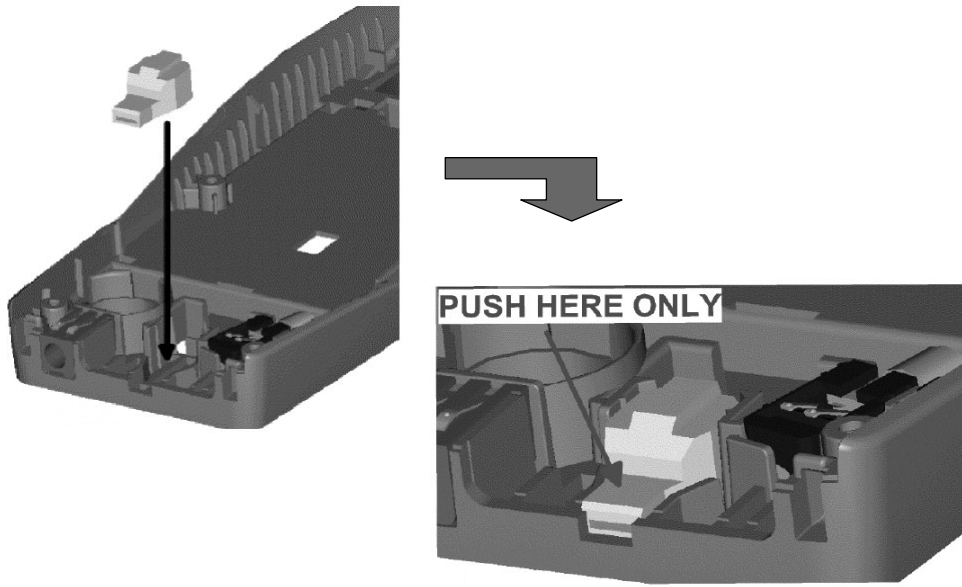
**b.) Vibra assembly**



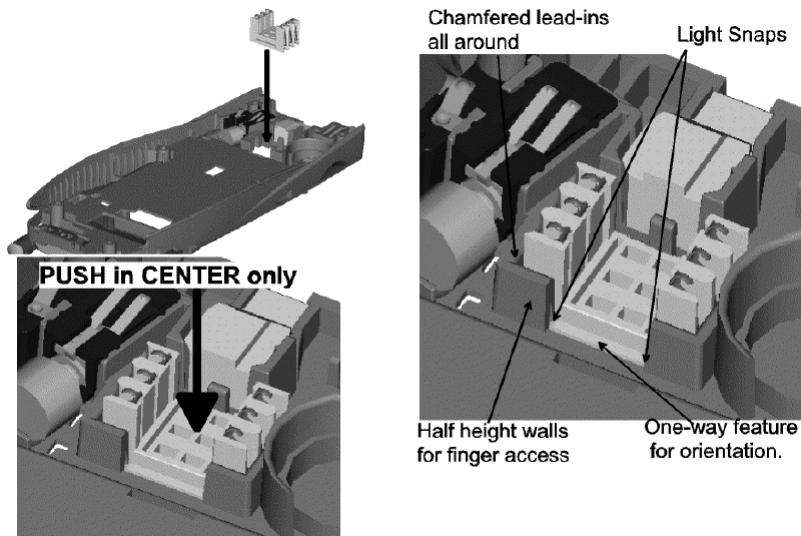
**c.) DC jack assembly**



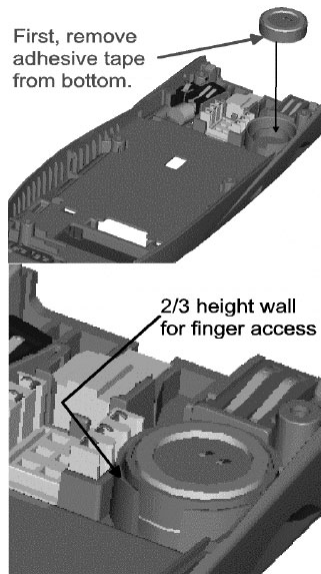
d.) Microphone assembly



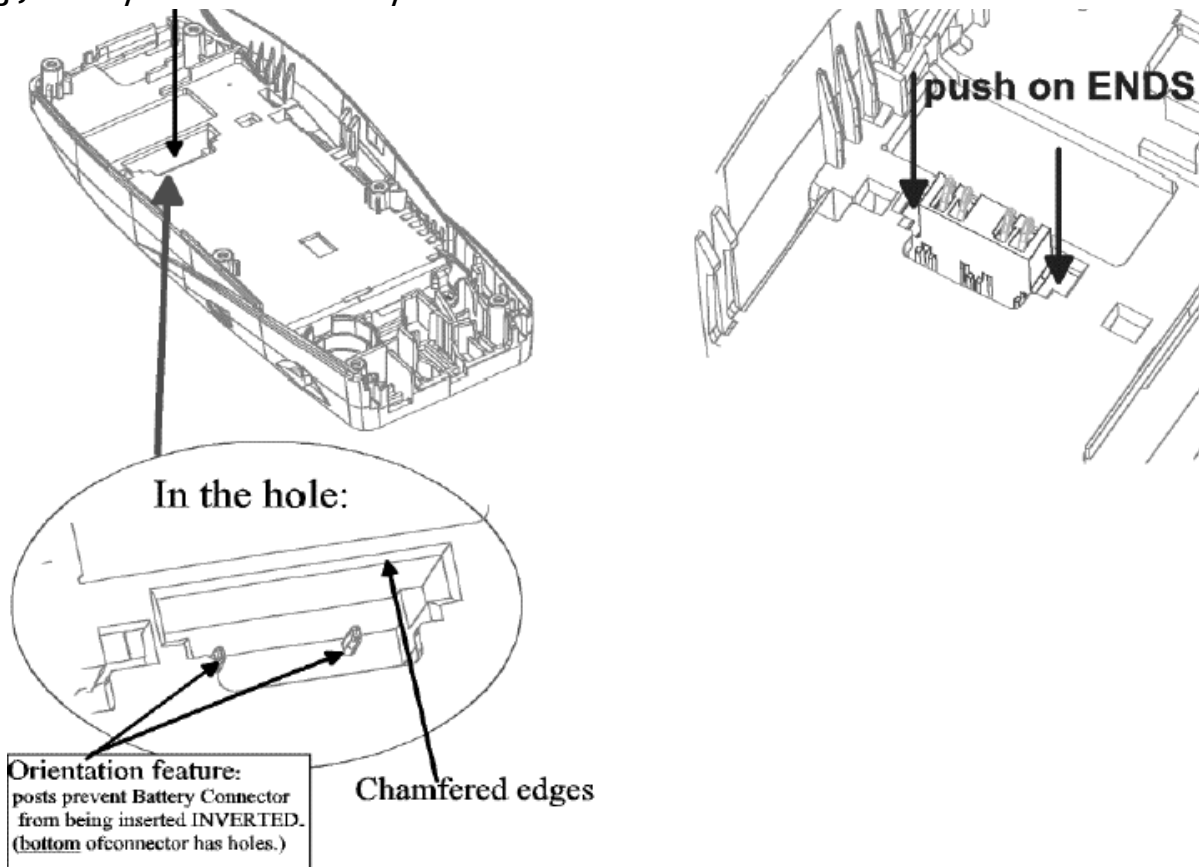
e.) SIM card assembly



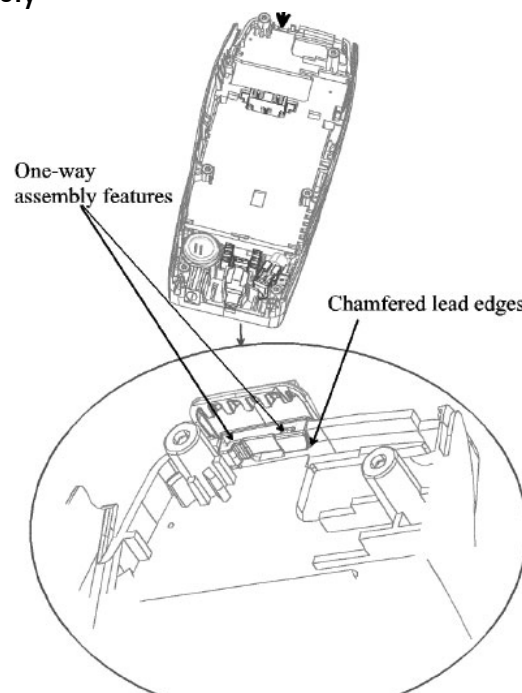
**f.) Midi speaker assembly**



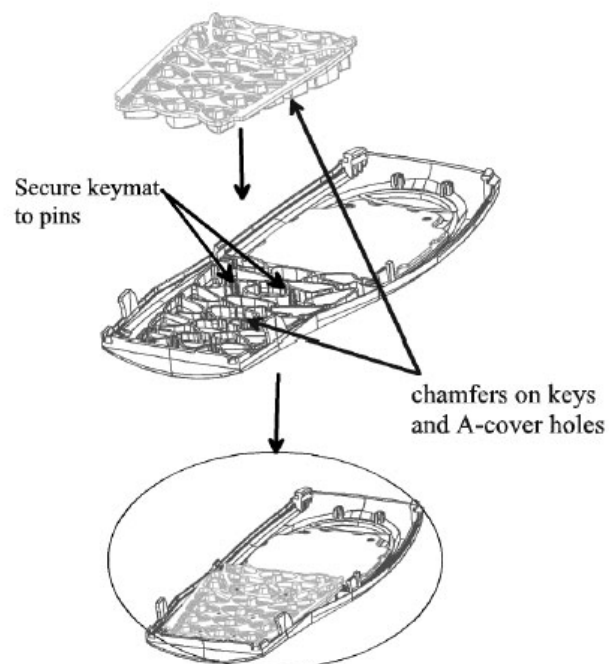
**g.) Battery connector assembly**



**h.) Power button assembly**



**i.) Keymat assembly**

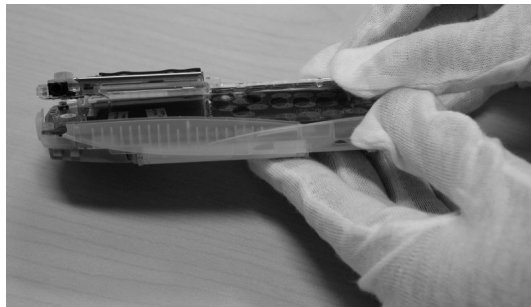


### 3. PWB assembly.



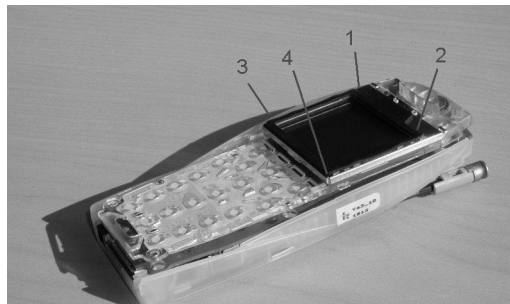
Place the PWB assembly inside the D-cover, making sure it is correctly aligned.

### 4. LCD assembly.



Place the display assembly on top of the PWB inside the D-cover.

*Note: Be careful not to bend the display assembly during placement.*

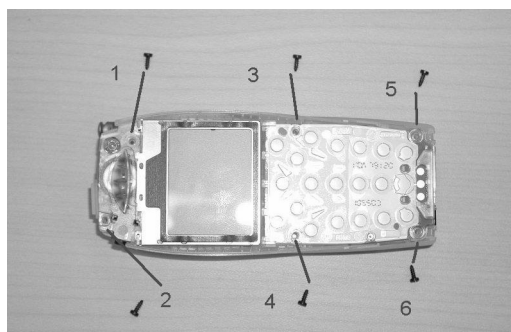


Snap the display assembly into the D-cover in the order shown.

*Note: Do not touch or apply pressure directly to the display glass.*



**5. Screw assembly.**



Mount the screws in the order shown above.

*Note: Use 23+/-2Ncm (350 RPM max).*

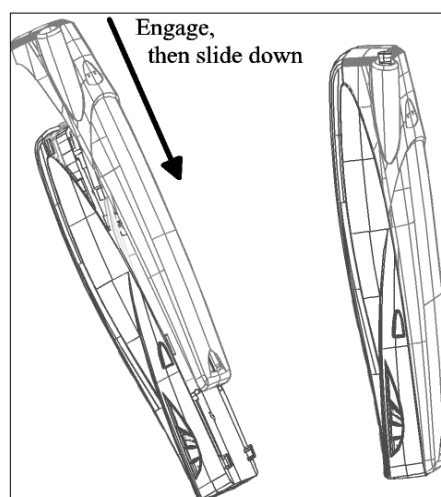
*Note: Ensure that the display assembly is inserted properly prior to mounting the screws.*

**6. A-cover assembly.**



Mount the A-cover by fitting the guide fins into the D-cover first.

**7. B-cover assembly.**



Mount the B-cover as shown.

